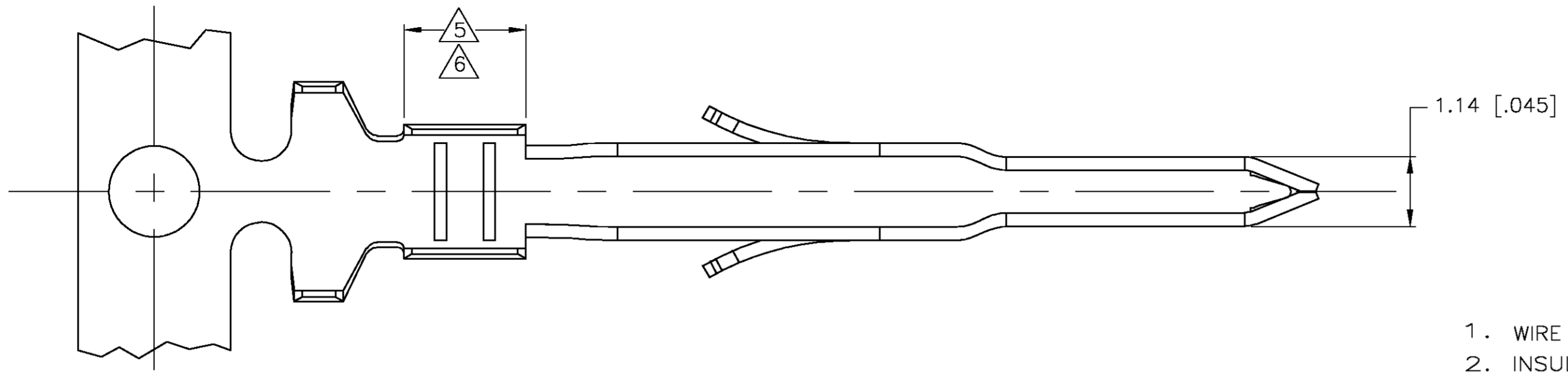
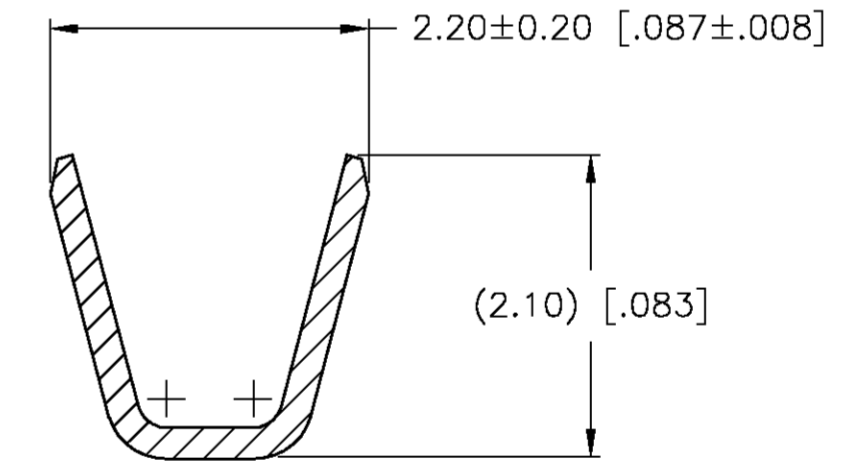
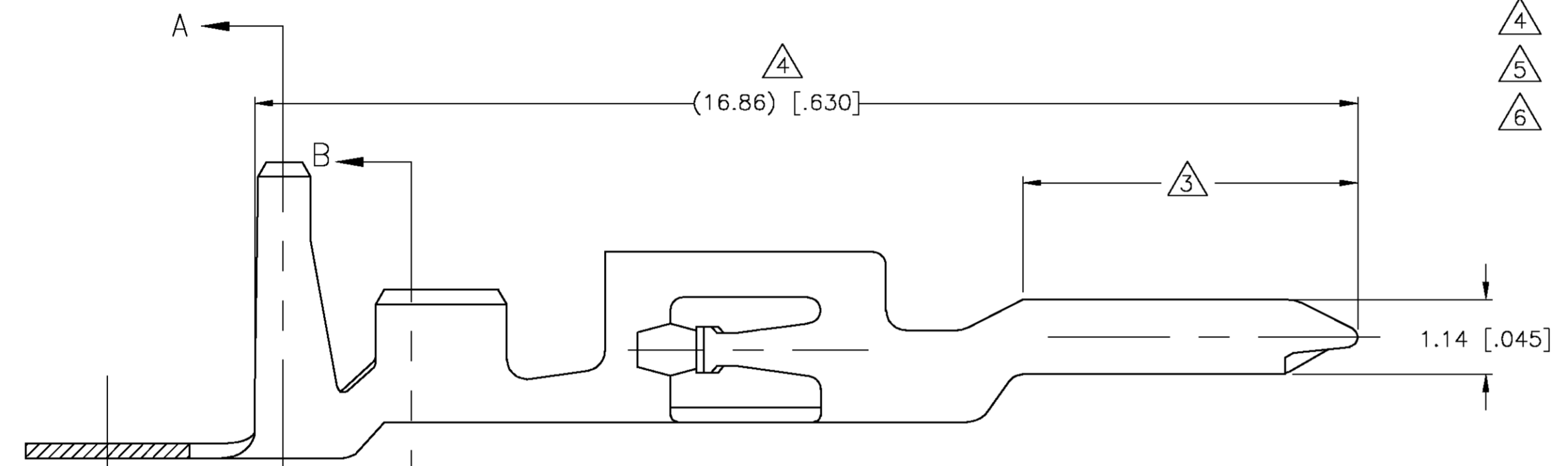


THIS DRAWING IS UNPUBLISHED. RELEASED FOR PUBLICATION
 © COPYRIGHT BY TYCO ELECTRONICS CORPORATION. ALL RIGHTS RESERVED.

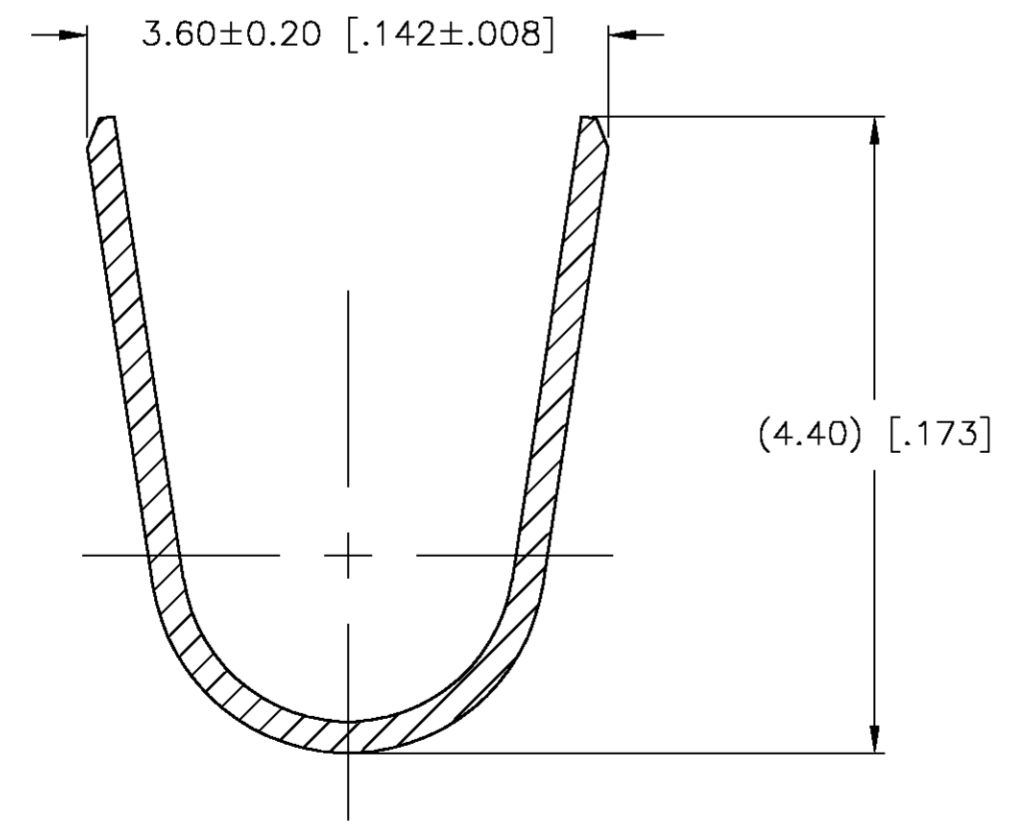
LOC		DIST		REVISIONS			
P	LTR	DESCRIPTION	DATE	DWN	APVD		
	D	REVISED PER 0G3B-1115-04	23JUNE05	KW	DC		



1. WIRE RANGE: 0.30-0.87mm² (22-18 AWG).
2. INSULATION RANGE: 1.50-2.40 DIA.
- △3 FINISH: 0.76μm MINIMUM GOLD OVER 1.27μm MINIMUM NICKEL REQUIRED
- △4 FINISH: NICKEL BASE PLATE ON ALL SURFACES IN THIS AREA.
- △5 FINISH: 2.54μm MINIMUM TIN-LEAD ON ALL SURFACES IN THIS AREA.
- △6 FINISH: 2.54μm MINIMUM TIN ON ALL SURFACES IN THIS AREA.



SECTION B-B
SCALE 20:1



SECTION A-A
SCALE 20:1

△3 △4 △6	0.22[.009] PHOS BRONZE	794576-4
△3 △4 △5	0.22[.009] PHOS BRONZE	794576-2
PRE-TIN	0.22[.009] PHOS BRONZE	794576-1
FINISH	MATERIAL	PART NUMBER

THIS DRAWING IS A CONTROLLED DOCUMENT.		DWN S. HOOVER 07-FEB-2003	Tyco Electronics Corporation Harrisburg, Pa 17105-3608	
DIMENSIONS: mm [INCHES]		CHK D. COLEY 07-FEB-2003	NAME CONTACT, MALE, AMP-DUAC(TM)	
TOLERANCES UNLESS OTHERWISE SPECIFIED: 0 PLC ± 1 PLC ± 2 PLC ± 0.10 [.004] 3 PLC ± 4 PLC ±		APVD D. COLEY 07-FEB-2003	PRODUCT SPEC 108-1646	
MATERIAL 0.22 [.009]PH BRZ		FINISH SEE TABLE	APPLICATION SPEC 114-6067	RESTRICTED TO -
CUSTOMER DRAWING		SCALE 14:1	SHEET 1 OF 1	REV D

